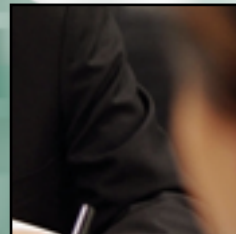
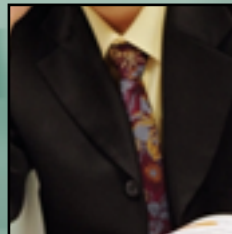
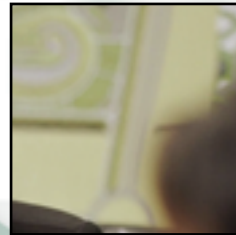
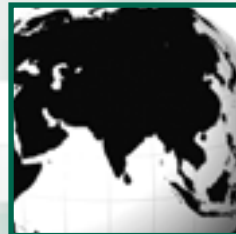




TOEIC Bridge™

Examinee Handbook



*Listening.
Learning.
Leading.*

Table of Contents

About the TOEIC Bridge™ Test	2	TOEIC Bridge Background Questionnaire and Answer Sheet	12
TOEIC Bridge Test Format	2	Background Questionnaire	12
Who Takes the TOEIC Bridge Test?	2	Answer Sheet	12
Frequently Asked Questions	2	Accent Marks	12
Why take the TOEIC Bridge test?	2	Group Code	12
When and where can I take the TOEIC Bridge test?	2	Custom Codes	12
How often can I take the TOEIC Bridge test?	2	Sample Background Questionnaire	13
How much does the TOEIC Bridge test cost?	2	Sample Answer Sheet	15
What score do I need to “pass” the TOEIC Bridge test?	2	TOEIC Bridge Test Scores	17
From what kind of contexts are the TOEIC Bridge test questions drawn?	3	Test Fairness and Score Use	17
If I have a disability, can I still take the TOEIC Bridge test?	3	Score Reports	17
Certificate of Achievement	3	Interpreting Scores	17
Preparing to Take the TOEIC Bridge Test	4	Subscores	17
How to Get Ready to Take the TOEIC Bridge Test	4	Reliability	18
During the Test	4	Standard Error of Measurement	18
Identification Requirements	4	Repeat Test Takers	18
Test Center Procedures and Regulations	6	Validity	18
Dismissal from Test Session	6	Test Score Data Retention	18
Sample Questions	7	Rescore Requests	18
General Directions	7	Policies and Guidelines for the Use of TOEIC Bridge Scores	19
Section 1: Listening Comprehension	7	Introduction	19
Section 2: Reading Comprehension	10	Policies	19
		Guidelines	19
		Normally Appropriate Uses of TOEIC Bridge Scores	19
		Comments	20

For more information, visit us on the web at www.ets.org/toEICbridge or contact your local ETS representative. A list of local ETS representatives can be found on the web at www.ets.org/toEICbridge. If there is no ETS representative in your country, please contact us at:

Mail:
TOEIC Bridge Program
Educational Testing Service
Rosedale Road
Princeton, NJ 08541
Phone: 1-609-771-7170
Fax: 1-609-771-7111
E-mail: TOEIC@ets.org

Copyright © 2007 by Educational Testing Service. All rights reserved.

EDUCATIONAL TESTING SERVICE, ETS, the ETS logo, TEST OF ENGLISH FOR INTERNATIONAL COMMUNICATION, TOEIC, and the TOEIC logo are registered trademarks of Educational Testing Service.

About the TOEIC Bridge™ Test

The TOEIC Bridge™ test is an English language proficiency test for people whose native language is not English. It was developed for beginning level to lower-intermediate level learners of English. Test takers may be students of English or people who need to use English for work or travel. The TOEIC Bridge test provides a reliable and valid indication of learners' English abilities.

“TOEIC®” stands for the “Test of English for International Communication.” The TOEIC test is also a proficiency test for people whose native language is not English, but it tests proficiency at all levels—from beginning to advanced.

The TOEIC Bridge test is different from the TOEIC test. The TOEIC Bridge test was developed especially for beginning to lower-intermediate learners of English, so the TOEIC Bridge test is not as difficult as the TOEIC test.

TOEIC Bridge Test Format

The TOEIC Bridge test is an one-hour multiple-choice test that consists of 100 questions divided into two sections:

- **Listening Section:** The Listening section tests how well you understand spoken English. It consists of three parts and contains 50 questions administered by audiocassette or CD.

You will be asked to answer a variety of statements, questions, short conversations, and short talks recorded in English.

Total time: approximately 25 minutes.

- **Reading Section:** The Reading section includes two parts testing how well you understand written English. You will read a variety of materials and respond at your own pace to 50 questions based on the content of the materials provided to you. Total time: 35 minutes.

You will respond to test questions by marking one of the letters (A), (B), (C), or (D) with a pencil on a separate answer sheet. Although the actual testing time is approximately one hour, additional time is needed to allow you to complete the TOEIC Bridge Background Questionnaire on the answer sheet. Therefore, you should allow approximately 1.5 hours to take the test.

Who Takes the TOEIC Bridge Test?

- students who are learning English and are at a beginning to lower-intermediate level
- learners of English who are taking commercial English language courses
- people who need to know some English for work, travel, or other purposes.

Frequently Asked Questions

Why take the TOEIC Bridge test?

The TOEIC Bridge test is the choice of more than 180,000 examinees a year and is recognized by hundreds of corporations. As a fair and objective measure of English proficiency for beginning-level to lower-intermediate-level learners, the TOEIC Bridge test will enable you to:

- verify your current level of English proficiency
- monitor your progress in English
- set your own learning goals

When and where can I take the TOEIC Bridge test?

The TOEIC Bridge test is available throughout the world. Testing can be arranged through schools, corporations or other organizations that ask students or employees to take the TOEIC Bridge test. If testing has not been arranged through your organization, you can contact your local ETS® TOEIC representative to find out when and where you can take the test. A list of local ETS Representatives can be found on the web at www.ets.org/toEICbridge.

Your local TOEIC representative is responsible for both the TOEIC test and the TOEIC Bridge test, so please tell the representative that you would like to know about the TOEIC Bridge test.

How often can I take the TOEIC Bridge test?

One month should lapse between each TOEIC Bridge test. If you take the test more than once a month, your test will not be scored and you will not receive a refund. You will need to pay again to re-take the test once one month has lapsed. Please contact your local ETS TOEIC representative.

How much does the TOEIC Bridge test cost?

TOEIC Bridge prices vary worldwide. To inquire about pricing in your area, contact your local ETS TOEIC representative.

What score do I need to “pass” the TOEIC Bridge test?

The TOEIC Bridge test is not the kind of test that one “passes” or “fails.” Not every job or task requires the same level of English proficiency. The TOEIC Bridge test measures different levels of English ability or proficiency. It helps learners set goals and measure their progress as their English improves.

It enables people to demonstrate what they currently can accomplish in English. The single, continuous scale also makes it possible for learners to set attainable goals and to measure their progress as their English improves.

Frequently Asked Questions *(continued)*

From what kind of contexts are the TOEIC Bridge test questions drawn?

These are some examples of the settings and situations you may find in TOEIC Bridge test questions:

- **Activities:** hobbies, sports, daily routines, free-time activities
- **Dining out:** lunches, restaurants, reservations
- **Entertainment:** cinema, theater, music, art, exhibitions, museums, sports, games
- **Family and friends:** family members, activities with friends, invitations, pets
- **General business:** sales, conferences, training, bills, banking, appointments, advertising
- **Health:** doctors, dentists, clinics, hospitals, general health and healthcare
- **Housing:** apartments, houses, farms, buying and renting, repairs
- **Offices:** letters, memos, telephones, fax and e-mail messages, office equipment and furniture, office procedures, office small talk

- **News:** weather forecasts, news programs, newspapers
- **School:** classes, classrooms, subjects, teachers, students, books, homework
- **Shopping:** groceries, clothes, purchases
- **Travel:** directions, trains, airplanes, taxis, buses, ships, ferries, tickets, schedules, station and airport announcements, car rentals, hotels, reservations

If I have a disability, can I still take the TOEIC Bridge test?

If you require special testing arrangements because of a disability, please contact your local TOEIC representative office to discuss your needs at least six weeks in advance of the test date. Your representative will make every effort to accommodate you. There is no additional cost for special accommodations.

Certificate of Achievement

The TOEIC Bridge Certificate of Achievement is an acknowledgment of your English proficiency. The TOEIC Bridge Certificate of Achievement is not available through some services. Contact your local representative for availability.

The Certificate of Achievement features:

- your name
- your Listening score, Reading score, and Total test score
- test date and location
- administering organization
- watermark on back
- a format that is suitable for framing



Preparing to Take the TOEIC Bridge Test

How to Get Ready to Take the TOEIC Bridge Test

The TOEIC Bridge test is not based on the content of any particular English course, but rather on your proficiency—your overall ability to use English. Improvement in proficiency may take some time and is generally achieved through a combination of practice and study.

Before taking the TOEIC Bridge test, there are several things you can do to prepare for the test and improve your English proficiency.

- Become familiar with the test format and how to mark your answers on the answer sheet. You can then focus your attention on the questions themselves, rather than on the format. Review carefully the test directions and the sample questions on pages 7–11 and the sample Background Questionnaire and sample Answer Sheet on pages 13–16.
- Immerse yourself in the language as frequently as possible and in as many ways as possible if it has been some time since you have had contact with English. Reading, watching TV and videos, listening to recordings, taking an English course, and speaking with friends and colleagues are some of the ways to practice English.
- Web Resource Guide
The official TOEIC web site has many resources you may find helpful to familiarize yourself with the test:
 - test preparation material
 - scoring information
 - frequently asked questions (FAQs)

During the Test

- Work quickly and carefully.
- Do not spend too much time on any one question.
- Mark your answers on your answer sheet and not in the test book.
- Mark only one answer for each question. If you mark more than one answer, that question will be counted wrong—even if one of the answers you marked is correct.
- You will receive credit only for answers marked in the circles on the answer sheet. Your score will be based on the number of questions you answer correctly. There is no penalty for guessing.
- Try to answer every question to the best of your ability.
- Pay close attention to the time during the Reading section of the test. In the Reading section (35 minutes) you have to pace yourself—so work quickly and if you do not know the answer to a question, come back to it later.
- You may not use note paper.

Identification Requirements

All test takers must read Part 1. Depending on whether you will be testing within or outside your country of citizenship, you must also read either Part 2 or Part 3, as appropriate.

Part 1: Information for All Test Takers

- You must have acceptable and valid ID with a signature and photograph to be admitted to a test center. Identification requirements are strictly enforced. It is your responsibility to read and understand the instructions and requirements.
- If you arrive at the test center without the required identification, the test administrator will not admit you, you cannot test, and you forfeit your test fee.

When registering for the test, **you must use exactly the same name that appears on the primary identification document you will present at the test center.** Make sure to provide your entire first (given) name and entire surname (family name). DO NOT register under a nickname. If the name shown on your primary identification does not match the name on the registration, you will not be permitted to test.

- Only misspellings of your name can be corrected at check-in—NAME CHANGES WILL NOT BE MADE. If your name has changed for any reason, including marriage, you must still present primary identification under the name you registered, or you will not be permitted to test.
- If the test center administrator questions the ID you present, you will be required to present additional proof of identity.
- If positive confirmation cannot be made, you may be refused admission to the test center and forfeit your test fee. Admittance to the test center does not imply that your form of identification is valid or that your scores will be reported.

Test center personnel will check your identification before assigning you a seat at the test center. The administrator will check your signature to verify that you are the person in your photo identification.

Acceptable Primary Identification Documents

- passport with photograph and signature
- driver's license with photograph and signature
- state identification with photograph and signature
- national identification with photograph and signature
- military identification with photograph and signature
- student ID

Acceptable Secondary Identification Documents

If your primary identification is missing either a photograph or signature, you must present one of the following secondary IDs that can be used to meet the photograph or signature requirement; you must present one of the following secondary IDs in addition to your primary ID. Secondary IDs that can be used to meet the photograph or signature requirements are:

- **a government-issued identification document** that has not expired including, but not limited to, passport, driver's license, state identification, national identification, or military identification. (There are some exceptions: see "Unacceptable Identification Documents" below.)

Unacceptable Identification Documents

- any expired ID
- draft classification card
- credit card of any kind
- Social Security card
- learner's permit or any temporary identification document
- international driver's license
- international student ID
- notary-prepared letter or document
- employee identification card

If you cannot meet the specified ID requirements or if you have questions about ID, please contact your local ETS TOEIC representative before registering for the test.

Part 2: If Testing WITHIN Your Country of Citizenship

Only one form of primary ID is needed if your primary ID document contains a photograph and signature. Please see the list of acceptable primary ID documents on this page. However, if the test administrator has any concerns about the primary ID document, you will be required to present a secondary ID from the list on this page.

If your primary ID does not contain your signature, you must either sign the document or present an additional ID from the list of secondary identification documents. The secondary ID cannot be expired and must contain a recent, recognizable photograph and your signature.

Part 3: If Testing OUTSIDE Your Country of Citizenship

You **MUST PRESENT YOUR PASSPORT** as your primary identification document (citizens of European Union and Schengen Zone countries, see special requirements below). If you do not meet this requirement, your test scores may not be reported.

If your passport is not written in **English language letters**, you must also present an additional ID from the list of secondary identification documents (see Part 1) that contains a recent, recognizable photo and is in English.

If your passport **does not contain your signature**, you must either sign your passport or present an additional ID from the list of secondary identification documents (see Part 1).

European Union/Schengen Zone Countries

If you are taking the test within a European Union or Schengen Zone country outside your own, you may use your valid national or European identity card if you have one. The card you present must contain a recent, recognizable photograph, your date of birth, and your signature. If your form of identification is not in English language letters and the test administrator cannot read the language in which it is written, you may not be allowed to test. If your official ID does not contain your signature, you must present an additional document from the list of secondary identification documents (see Part 1) that does contain your signature.

Preparing to Take the TOEIC Bridge Test *(continued)*

Test Center Procedures and Regulations

The following procedures and regulations apply during the entire test session, which begins when you are admitted to the test center and ends when you leave the test center.

- No test taker will be admitted after test materials have been distributed.
- Books, dictionaries, papers, notes, rulers, calculators, watch alarms, mobile phones, listening devices, recording or photographic equipment, highlighters, or aids of any kind are not allowed in the testing room.
- Paper of any kind is not permitted in the testing room.
- You may not mark or underline words in the test book or make notes in the test book or on the answer sheet.
- You must have the supervisor's permission to leave the testing room. Any lost time cannot be made up.
- There is no scheduled break during the TOEIC Bridge test. If you must leave the testing room, you are required to give the supervisor your identification document(s) before you leave the room.
- At the conclusion of the test you will be required to return your test book and answer sheet to the test supervisor.

Dismissal from Test Session

A test administrator/supervisor is authorized to dismiss you from a test session or your scores may be canceled, due to violations such as, but not limited to, the following:

- attempting to take the test for someone else or having someone else take the test for you
- failing to provide acceptable identification
- obtaining improper access to the test, a part of the test, or information about the test
- using a telephone or cell phone during the test session or during breaks
- using any aids in connection with the test, such as mechanical pencils, pens, pagers, beepers, calculators, watch calculators, books, pamphlets, notes, rulers, highlighter pens, stereos or radios with headphones, cell phones, watch alarms (including those with flashing lights or alarm sounds), stopwatches, dictionaries, translators, and any handheld electronic or photographic devices

- creating a disturbance (disruptive behavior in any form will not be tolerated; the test administrator/supervisor has sole discretion in determining what constitutes disruptive behavior)
- attempting to give or receive assistance, or otherwise communicate in any manner with another person about the content of the test during the administration, during breaks, or before dismissal of the test session.
- removing or attempting to remove test content, scratch paper, or notes relating to the test content from the test center. Under no circumstances may test content or any part of the test content be removed, reproduced, and/or disclosed by any means (e.g., hard copy, verbally, electronically) to any person or entity.
- using scratch paper during test session
- tampering with a computer
- taking a weapon or firearm into the test center
- taking food, drink, or tobacco into the testing room
- leaving the test center vicinity during the test session or during breaks
- leaving the testing room without permission
- taking excessive or extended unscheduled breaks during the test session. Test center administrators are required to strictly monitor unscheduled breaks and report test takers who take excessive or extended breaks.
- referring to, looking through, or working on any test, or test section, when not authorized to do so, or working after time has been called
- failing to follow any of the test administration regulations in this examinee handbook, given by the test administrator/supervisor, or specified in any test materials

The local ETS TOEIC representative reserves the right to take all action—including, but not limited to, barring you from future testing and/or canceling your scores—for failure to comply with test administration regulations or the test administrator/supervisor's directions. If your scores are canceled, they will not be reported, and your fees will not be refunded.

Sample Questions

With 100 questions, the TOEIC Bridge test measures a range of English proficiency. The following sample questions do not indicate the full range of difficulty you might find in an actual TOEIC Bridge test.

General Directions

The following general directions are taken directly from the test book. After the general directions are specific directions for each part of the test, along with sample questions for each of the parts.

This is a test of how well you can use the English language. The total time for the test is about one hour. The test is divided into five parts.

You should answer every question. Your score will be based on the number of questions that you answer correctly. Do not mark your answers in this test book. You must put all of your answers on the separate answer sheet.

When you answer a question, fill in the answer space corresponding to the letter of your choice. Fill in the space as in the example below.

Example

Mr. Jones ----- to his accountant yesterday.

- (A) talk
- (B) talking
- (C) talked
- (D) to talk

Sample Answer

(A) (B) (C) (D)

The sentence should read, "Mr. Jones talked to his accountant yesterday." Therefore, you should choose answer (C). Notice how this has been done in the example given.

Mark only one answer for each question. To change an answer, completely erase your old answer and then mark your new answer on the answer sheet. Mark the answer sheet carefully so that the test-scoring machine can record your test score accurately.

Section I: Listening Comprehension

This is the listening section of the test. There are three parts to this section.

Part I: Photographs

Directions: You will see a picture in your test book and you will hear four short statements.

Look at the picture in your test book and choose the statement that best describes what you see in the picture. Then mark your answer on your answer sheet.

Look at the example below and listen to the four statements.



Example

- You will hear:*
- (A) The boys are laughing.
 - (B) The boys are reading.
 - (C) The boys are fighting.
 - (D) The boys are painting.

Statement (B), "The boys are reading," best describes what you see in the picture. Therefore, you should choose answer (B).

Sample Answer

(A) (B) (C) (D)

Sample Questions (continued)

SAMPLE QUESTIONS

Question 1

You will see:

1.



You will hear: 1. Look at the picture marked number 1 in your test book.

- (A) These are houses.
- (B) These are farms.
- (C) These are cows.
- (D) These are horses.

Question 2

You will see:

2.



You will hear: 2. Look at the picture marked number 2 in your test book.

- (A) He's driving a truck.
- (B) He's opening the door.
- (C) He's washing a car.
- (D) He's cleaning the carpet.

Part II: Question-Response

Directions: Now, you will hear a question or statement followed by three responses. Choose the best response to each question or statement.

Example

Now listen to a sample question.

You will hear: Good morning, John. How are you?

- You will also hear:
- (A) I am fine, thank you.
 - (B) I am in the living room.
 - (C) My name is John.

The best response to the question "How are you?" is choice (A), "I am fine, thank you." Therefore, you should choose answer (A).

Sample Answer

(A) (B) (C) (D)

SAMPLE QUESTIONS

Question 1

You will hear: (Man B) What are you doing after dinner?

- (Man A)
- (A) A large pizza.
 - (B) On the table.
 - (C) Studying.

Question 2

You will hear: (Man) When does the train leave?

- (Woman)
- (A) At 2:05.
 - (B) A ticket.
 - (C) The next stop.

Question 3

You will hear: (Woman) Mary doesn't wear glasses, does she?

- (Man)
- (A) The class is in Room 4.
 - (B) No, she doesn't need them.
 - (C) No, it's made of plastic.

Question 4

You will hear: (Man A) Did you see that history program on TV last night?

- (Man B)
- (A) No, I was busy.
 - (B) Maybe I'll meet him tomorrow.
 - (C) Yes, there was.

Sample Questions (continued)

Part III: Short Conversations and Short Talks

Directions: Now, you will hear fifteen short talks or conversations.

In your test book, you will read a question followed by four answers. Choose the best answer to each question and mark it on your answer sheet.

Example (Short Conversations)

- You will hear:* (Man) Do you have any children, Mrs. Wilson?
(Woman) Yes, we have a boy who's three and a girl who's six.
(Man) They must keep you very busy.
- You will read:* How many children do the Wilsons have?
(A) Two.
(B) Three.
(C) Five.
(D) Six.

The best response to the question is choice (A), "Two." Therefore, you should choose answer (A).

Sample Answer

- (A) (B) (C) (D)

Example (Short Talks)

- You will hear:* (Man) I'm sorry, but all passengers must get off the bus here. The driver says there's a problem with the motor. Another bus will be here to pick us up in half an hour so we can continue our trip.
- You will read:* What was the problem?
(A) There are too many passengers.
(B) The bus is having engine trouble.
(C) There is a lot of traffic.
(D) The bus took the wrong road.

The best answer to the question is choice (B), "The bus is having engine trouble." Therefore, you should choose answer (B).

Sample Answer

- (A) (B) (C) (D)

SAMPLE QUESTIONS

Question 1

- You will hear:* (Woman) Your attention, please. The area in front of the terminal is for picking up passengers only. Cars left there will be removed.

- You will read:* Where is the announcement being heard?
(A) In a restaurant.
(B) In a supermarket.
(C) At a doctor's office.
(D) At an airport.

Question 2

- You will hear:* (Man) Have you seen my keys?
(Woman) No, have you lost them?
(Man) Yes, I can't find them anywhere.

- You will read:* What is the man's problem?
(A) He has lost his keys.
(B) He doesn't have a job.
(C) He can't find his car.
(D) He has nothing to wear.

Question 3

- You will hear:* (Man) The Central City Furniture Store is having a big clearance sale. Every bed, sofa, table and chair is reduced in price. But please hurry, because the sale ends on Friday.

- You will read:* What is on sale?
(A) Food.
(B) Furniture.
(C) A store.
(D) A house.

Question 4

- You will hear:* (Man A) I think we'd better get a taxi, don't you?
(Man B) Yes, the show starts soon, and we don't have time to wait for the bus.
(Man A) Let's go to the taxi stand by the station.

- You will read:* How will they get to the show?
(A) By bus.
(B) By train.
(C) On foot.
(D) By taxi.

Sample Questions (continued)

Section 2: Reading Comprehension

This is the reading section of the test. There are two parts to this section.

Part IV: Incomplete Sentences

Directions: This part of the test has incomplete sentences. There are four words or phrases, marked (A), (B), (C), and (D), under each sentence. Choose the **one** word or phrase that best completes the sentence. Then mark your answer on your answer sheet.

Example

Please turn off your computer at the ----- of the day.

- (A) ends
- (B) ending
- (C) end
- (D) ended

The sentence should read, "Please turn off your computer at the end of the day." Therefore, you should choose answer (C).

Sample Answer

- (A) (B) ● (D)

SAMPLE QUESTIONS

1. Maurice is one ----- my best friends.
(A) in
(B) of
(C) from
(D) with
2. The teacher asked Naomi to ----- on the lights.
(A) raise
(B) give
(C) reach
(D) turn
3. Andre and Juan are planning to take a ----- to Greece this summer.
(A) way
(B) distance
(C) travel
(D) trip
4. Kate visited the art gallery with ----- sister.
(A) her
(B) she
(C) hers
(D) she's

5. Dr. Smith was ----- happy to hear the news.
(A) special
(B) much
(C) very
(D) over

Part V: Reading Comprehension

Directions: The questions in this part of the test are based on reading materials such as notices, letters, forms, and advertisements. Choose the **one** best answer, (A), (B), (C), or (D), to each question. Then mark your answer on your answer sheet.

Read the following example.

Example

NOTICE

CAFETERIA CLOSED

Will reopen Monday, June 5

What will happen on June 5?

- (A) The workers will take a day off.
- (B) The cafeteria will open.
- (C) The prices will go down.
- (D) The school will close.

The notice says that the cafeteria is closed and will open again on June 5. Therefore, you should choose answer (B).

Sample Answer

- (A) ● (C) (D)

Sample Questions (continued)

SAMPLE QUESTIONS

Questions 1–2 refer to the following advertisement.

Job Openings

Part-time jobs available at Margate Hotel near shopping center. Kitchen staff, waiters, bellhops, drivers needed. Wages range from £8 to £10 per hour. For further information, call the assistant manager at 555-0174.

1. What is the advertisement for?
(A) Hotel employment
(B) Training courses
(C) Restaurant food
(D) Hotel rooms
2. What should you do to get more details?
(A) Pay £8.
(B) Talk to the kitchen staff.
(C) Telephone the assistant manager.
(D) Write to the newspaper.

Questions 3–4 refer to the following notice.

The Francisburg Department of Recreation is sponsoring a day trip to the amusement park in West Hills. The trip is part of the department's program of summer activities for young people ages 8 to 14. Buses for the event will leave from Central Primary School, the Philipsburg Swimming Pool, and from the train station at 8:00 a.m. on July 20. For more information or to make a reservation, contact the Department of Recreation.

3. What event is being announced?
(A) A swimming competition
(B) A visit to an amusement park
(C) An annual school picnic
(D) An opening ceremony at the train station
4. What is the purpose of the event?
(A) To provide an outing for children
(B) To raise money for new recreation facilities
(C) To teach children how to swim
(D) To ride the new inter-city train

Answer Key

PART I	PART II	PART III	PART IV	PART V
1. D	1. C	1. D	1. B	1. A
2. C	2. A	2. A	2. D	2. C
	3. B	3. B	3. D	3. B
	4. A	4. D	4. A	4. A
			5. C	

TOEIC Bridge Background Questionnaire and Answer Sheet

In order to provide enhanced feedback to TOEIC Bridge clients and examinees, the TOEIC Bridge Program will ask you to complete the TOEIC Bridge Questionnaire at the testing session before you take the TOEIC Bridge test.

Background Questionnaire

The TOEIC Bridge Background Questionnaire asks about your education, work, English language, and TOEIC Bridge test-taking experience. Your responses to the questionnaire enable your organization to learn more about the backgrounds of people who take the test and some of the factors that affect TOEIC Bridge scores and improvement in English. Your responses to the questionnaire are kept confidential and do not in any way affect your TOEIC Bridge scores. We encourage you to answer all of the questions. A sample of the questionnaire is included on pages 13 and 14 of this handbook.

Answer Sheet

A sample of the Answer Sheet appears on pages 15 and 16 of this handbook.

Accent Marks

If your name (family name and/or first name) is written with any accent marks, you should complete the top half of section 1 on side 1 of the answer sheet. Above the boxes where you will write your name, there is an area that contains accent marks. You should fill in the circle that corresponds to the accent mark above each letter that contains an accent.

Group Code

Your test administrator may ask you to enter a number on side 1, section 5 of the answer sheet. The purpose of this group code is to enable TOEIC Bridge clients to keep track of the performance of a group of people who take the TOEIC Bridge test two or more times as part of a specific English training program. The test administrator will give you the appropriate number to enter in the group code section if your organization has asked for this option.

Custom Codes

Your test administrator may ask you to enter a number or numbers on side 2, section 12 of the answer sheet. The purpose of custom codes is to keep track of the performance of certain TOEIC Bridge examinees or groups of examinees. The test administrator will give you the appropriate number or numbers to enter in the custom codes section if your organization has asked for this option.

Before the actual test begins, if you have any questions about the TOEIC Bridge Background Questionnaire and Answer Sheet, please ask your test administrator.



TOEIC™ Bridge Background Questionnaire

1. Which of the following best describes what you do now?

- A. I am employed (full-time or part-time)
- B. I am a student (not employed)
- C. Other

2. Please choose the highest level of education listed below which you have completed.

- A. Elementary school
- B. Junior high school
- C. High School
- D. Technical/vocational school
- E. Some college/university
- F. University (undergraduate)
- G. Graduate School

3. How old are you?

- A. Under 15
- B. 15 – 19
- C. 20 – 24
- D. 25 – 29
- E. 30 or older

4. How many years did you study English in school and university?

- A. Less than 1 year
- B. 1 – 2 years
- C. 2 – 5 years
- D. 5 – 10 years
- E. More than 10 years

How important is each of the following English skills for you at school or work? (Choose one answer for each skill.)

5. Listening

- A. Important
- B. Somewhat important
- C. Not important

6. Reading

- A. Important
- B. Somewhat important
- C. Not important

7. Speaking

- A. Important
- B. Somewhat important
- C. Not important

8. Writing

- A. Important
- B. Somewhat important
- C. Not important

9. Before today, how many times have you taken the TOEIC Bridge test?

- A. Never
- B. One time
- C. Two times
- D. Three times
- E. Four or more times

(IF YOU ARE A STUDENT OR UNEMPLOYED, PLEASE STOP HERE.)

(IF YOU ARE EMPLOYED, PLEASE CONTINUE WITH THE QUESTIONNAIRE ON THE NEXT PAGE.)



Copyright © 2006. EDUCATIONAL TESTING SERVICE, ETS, ETS logo, and TOEIC are registered trademarks of Educational Testing Service.



10. Which of the following categories best applies to your job?

- A. Executive, Administrative, Managerial
- B. Professional, Technical, Scientific
- C. Marketing and Sales
- D. Administrative Support and Clerical
- E. Service
- F. Mechanics, Installers, and Repairers
- G. Construction trades
- H. Production
- I. Transportation and Material Moving
- J. Handlers, Helpers, and Laborers (Unskilled Labor)
- K. Armed Forces

11. What is your level in your company?

- A. Non-managerial/non-supervisory
- B. Supervisory
- C. Managerial

12. About how many years have you been with your company?

- A. Less than 2 years
- B. 2 – 5 years
- C. 5 – 10 years
- D. More than 10 years

13. About how much of your time at work do you spend using English?

- A. 0 to 10%
- B. 11 to 20%
- C. 21 to 50%
- D. 51 to 100%



11 QUESTIONNAIRE RESPONSES

- 1 (A) (B) (C)
- 2 (A) (B) (C) (D) (E) (F) (G)
- 3 (A) (B) (C) (D) (E)
- 4 (A) (B) (C) (D) (E)
- 5 (A) (B) (C)
- 6 (A) (B) (C)
- 7 (A) (B) (C)
- 8 (A) (B) (C)
- 9 (A) (B) (C) (D) (E)
- 10 (A) (B) (C) (D) (E) (F) (G) (H) (I) (J) (K)
- 11 (A) (B) (C)
- 12 (A) (B) (C) (D)
- 13 (A) (B) (C) (D)
- 14 (A) (B) (C) (D) (E)
- 15 (A) (B) (C) (D) (E)
- 16 (A) (B) (C) (D) (E)
- 17 (A) (B) (C) (D) (E)

12

CUSTOM 1			CUSTOM 2			CUSTOM 3		
0	0	0	0	0	0	0	0	0
1	1	1	1	1	1	1	1	1
2	2	2	2	2	2	2	2	2
3	3	3	3	3	3	3	3	3
4	4	4	4	4	4	4	4	4
5	5	5	5	5	5	5	5	5
6	6	6	6	6	6	6	6	6
7	7	7	7	7	7	7	7	7
8	8	8	8	8	8	8	8	8
9	9	9	9	9	9	9	9	9

13 SIGNATURE AND DATE: Please copy the statement below (do not print) and sign your name as you would an official document.

I hereby agree to the conditions set forth online at www.ets.org/toeic and/or *TOEIC Bridge Examinee Handbook* and certify that I am the person whose name appears on this answer sheet.

Signature: _____ **Date:** _____

LISTENING SECTION

- | | |
|--------------------|--------------------|
| 1 (A) (B) (C) (D) | 26 (A) (B) (C) |
| 2 (A) (B) (C) (D) | 27 (A) (B) (C) |
| 3 (A) (B) (C) (D) | 28 (A) (B) (C) |
| 4 (A) (B) (C) (D) | 29 (A) (B) (C) |
| 5 (A) (B) (C) (D) | 30 (A) (B) (C) |
| 6 (A) (B) (C) (D) | 31 (A) (B) (C) |
| 7 (A) (B) (C) (D) | 32 (A) (B) (C) |
| 8 (A) (B) (C) (D) | 33 (A) (B) (C) |
| 9 (A) (B) (C) (D) | 34 (A) (B) (C) |
| 10 (A) (B) (C) (D) | 35 (A) (B) (C) |
| 11 (A) (B) (C) (D) | 36 (A) (B) (C) (D) |
| 12 (A) (B) (C) (D) | 37 (A) (B) (C) (D) |
| 13 (A) (B) (C) (D) | 38 (A) (B) (C) (D) |
| 14 (A) (B) (C) (D) | 39 (A) (B) (C) (D) |
| 15 (A) (B) (C) (D) | 40 (A) (B) (C) (D) |
| 16 (A) (B) (C) | 41 (A) (B) (C) (D) |
| 17 (A) (B) (C) | 42 (A) (B) (C) (D) |
| 18 (A) (B) (C) | 43 (A) (B) (C) (D) |
| 19 (A) (B) (C) | 44 (A) (B) (C) (D) |
| 20 (A) (B) (C) | 45 (A) (B) (C) (D) |
| 21 (A) (B) (C) | 46 (A) (B) (C) (D) |
| 22 (A) (B) (C) | 47 (A) (B) (C) (D) |
| 23 (A) (B) (C) | 48 (A) (B) (C) (D) |
| 24 (A) (B) (C) | 49 (A) (B) (C) (D) |
| 25 (A) (B) (C) | 50 (A) (B) (C) (D) |

READING SECTION

- | | |
|--------------------|---------------------|
| 51 (A) (B) (C) (D) | 76 (A) (B) (C) (D) |
| 52 (A) (B) (C) (D) | 77 (A) (B) (C) (D) |
| 53 (A) (B) (C) (D) | 78 (A) (B) (C) (D) |
| 54 (A) (B) (C) (D) | 79 (A) (B) (C) (D) |
| 55 (A) (B) (C) (D) | 80 (A) (B) (C) (D) |
| 56 (A) (B) (C) (D) | 81 (A) (B) (C) (D) |
| 57 (A) (B) (C) (D) | 82 (A) (B) (C) (D) |
| 58 (A) (B) (C) (D) | 83 (A) (B) (C) (D) |
| 59 (A) (B) (C) (D) | 84 (A) (B) (C) (D) |
| 60 (A) (B) (C) (D) | 85 (A) (B) (C) (D) |
| 61 (A) (B) (C) (D) | 86 (A) (B) (C) (D) |
| 62 (A) (B) (C) (D) | 87 (A) (B) (C) (D) |
| 63 (A) (B) (C) (D) | 88 (A) (B) (C) (D) |
| 64 (A) (B) (C) (D) | 89 (A) (B) (C) (D) |
| 65 (A) (B) (C) (D) | 90 (A) (B) (C) (D) |
| 66 (A) (B) (C) (D) | 91 (A) (B) (C) (D) |
| 67 (A) (B) (C) (D) | 92 (A) (B) (C) (D) |
| 68 (A) (B) (C) (D) | 93 (A) (B) (C) (D) |
| 69 (A) (B) (C) (D) | 94 (A) (B) (C) (D) |
| 70 (A) (B) (C) (D) | 95 (A) (B) (C) (D) |
| 71 (A) (B) (C) (D) | 96 (A) (B) (C) (D) |
| 72 (A) (B) (C) (D) | 97 (A) (B) (C) (D) |
| 73 (A) (B) (C) (D) | 98 (A) (B) (C) (D) |
| 74 (A) (B) (C) (D) | 99 (A) (B) (C) (D) |
| 75 (A) (B) (C) (D) | 100 (A) (B) (C) (D) |

00378 • 50610 • TF115E100 • Printed in U.S.A.
MH05301 Q3191-1,2

729207



Copyright © 2005. EDUCATIONAL TESTING SERVICE, ETS, ETS logo and TOEIC are registered trademarks of Educational Testing Service.

TOEIC Bridge Test Scores

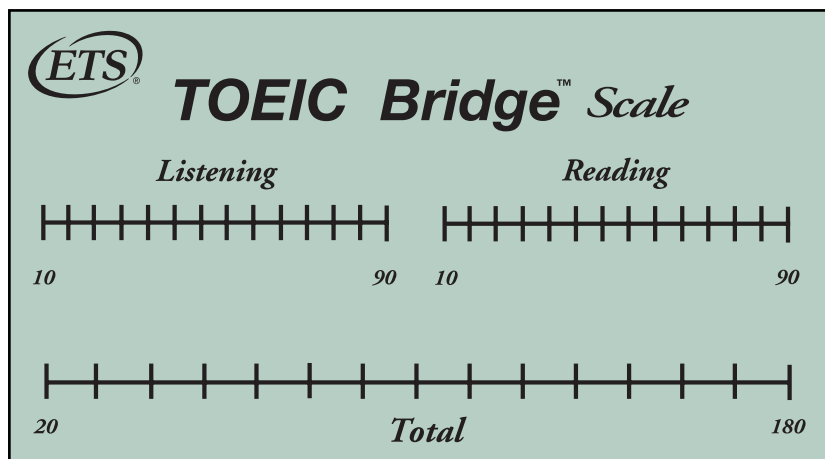
Test Fairness and Score Use

The ETS TOEIC Bridge Program and its authorized local representatives have taken steps to ensure, to the extent possible, that tests and test scores are fair for all test takers, regardless of gender, age, nationality, and test-taker industry background.

Subscores

In addition to Listening and Reading scores and total scores, you will receive TOEIC Bridge subscores, which will give you more information about your performance on the test.

Your performance on different parts of the test may give you an idea of your strengths and limitations in language areas. For example, your score on one part of the test may indicate how well you know English grammar. Your score on another part may tell you about your understanding of vocabulary.



Score Reports

The scores you will receive are determined by the number of questions you answer correctly. The number of correct responses on each section, Listening and Reading, is converted to a number on a scale of 20 to 180. The statistical procedure used to convert scores to a common scale for each section ensures that TOEIC Bridge scores can be compared across different test forms, which indicate similar levels of English proficiency. There is no penalty for wrong answers.

If you take the test through your employer or sponsoring organization, your scores are provided to that organization. It is the responsibility of your employer or organization to provide you with a score report. If you take the test independently, you will receive your score report directly from the local representative.

Interpreting Scores

The TOEIC Bridge test scores you will receive are determined by the number of questions you answer correctly. There is no penalty for wrong answers. The number of correct responses on each section, Listening and Reading, is converted to a number on a scale of 10 to 90. The statistical procedure used to convert scores to a common scale for each section seeks to ensure that TOEIC Bridge listening and reading scores obtained on different administration dates mean the same thing in terms of the level of English proficiency indicated.

When you take the TOEIC Bridge test, your scores on different parts of the test—subscores—are compared to the scores of other people who took the same test as you did. Subscore ratings are 1, 2, or 3, with 3 being the highest rating. The ratings of 1, 2, and 3 for a particular subscore are determined based on the distribution of that subscore. For example, approximately the top 25% of examinees receive a rating of ‘3,’ and approximately the bottom 30% of examinees receive a rating of ‘1.’ The examinees in the middle receive a rating of ‘2.’ Unlike scaled scores, subscore ratings are not equated and cannot be compared across test forms. However, you can compare your subscore ratings with examinees who take the same test form as you do.

You will receive a subscore in each of the following areas:

Functions: This subscore shows how well you can understand what a speaker is trying to do with the language. Examples of functions include offering, requesting, telling the time, giving instructions, and asking for instructions.

Listening Strategies: This subscore shows how well you use strategies to get information from a spoken text. Examples of these strategies include listening for stressed syllables, guessing meaning from context, listening for required information, and hearing differences between similar sounds.

Reading Strategies: This subscore shows how well you use strategies to get information from a written text. Examples include skimming, scanning, reading for required information,

TOEIC Bridge Test Scores (continued)

identifying the purpose and/or main idea of a text, and making inferences.

Vocabulary: This subscore shows how well you understand short phrases or words in context.

Grammar: This subscore shows how well you understand the form, meaning, and use of English grammar.

Reliability

Reliability is defined as the proportion of observed score variance that is due to true score variance. It is an indicator of the extent to which test scores will be consistent across different conditions of administration and/or administration of alternate forms of a test. The type of reliability used in the TOEIC Bridge test is reported as an internal consistency measure using the KR-20 reliability index. The KR-20 reliability index assesses the extent to which all items measure the same construct. The more homogeneous the test items, the more consistently the examinees will perform. The reliability of the TOEIC Bridge Listening and Reading section scores across all forms from our norming samples has been approximately 0.85 and up.

Standard Error of Measurement (SEM)

Errors of measurement occur when an examinee performs differently on one occasion or test form than on another for reasons that may or may not be related to the purpose of the test. A person may try harder, be more (or less) tired or anxious compared to some other occasion, have greater familiarity with the content of questions on one test form than on another test form, or simply guess more questions correctly on one occasion than on another. These reasons for inconsistency are generally referred to as errors of measurement. The Standard Error of Measurement (SEM) is an estimate of average difference between true scores and obtained test scores, and is about 4 scaled score points for each of the TOEIC Bridge Listening and Reading sections. An examinee's true score could be estimated by ± 4 scaled score points around the test score obtained from one administration. For example, if you obtain a scaled score of 70 on the TOEIC Bridge Listening section, 68% of the time your true score will fluctuate between approximately 66 and 74.

Repeat Test Takers

If you take another version of the TOEIC Bridge, you will probably obtain slightly different scores from those you received the first time. A question like this usually arises, "How big of a difference do I need to get between two Listening scores or between two Reading scores before I can say that there is a real difference in my level of proficiency?" This question involves two independent tests given at two different times. The error of measurement associated

with the score obtained from one administration is called the SEM. The errors of measurement associated with two administrations are called the Standard Error of Difference (SE_{diff}). The SE_{diff} for each of the TOEIC Bridge Listening and Reading sections is about 6 scaled score points.

If a person began training with a Listening score of 70 and, following training, received a score of 78 on a different test form, has that examinee really improved in Listening or was this increase just a statistical fluke? To determine whether this was a true increase in the TOEIC Bridge score, the examinee would construct a band of $\pm 1 SE_{diff}$, or ± 6 points, around the obtained scores. In this case, the examinee has truly improved because the post-training score fell outside of the SE_{diff} (i.e., 64–76). Using this band, we can say with 68% confidence that the examinee has truly increased his or her proficiency level between the two tests.

Validity

Primary evidence that the TOEIC Bridge measures English language proficiency comes from the careful way in which language testing experts design and assemble the test so as to include a variety of important English language tasks. Further evidence comes from the very high correlation of Bridge scores (high .80s) with other local tests of English language proficiency and with the longer, more difficult TOEIC test. In addition, TOEIC Bridge scores have shown moderately strong correlations (.30s and .40s) with test-taker reports of their own ability to accomplish certain English language tasks such as the following:

- Understanding vocabulary and grammar when reading English
- Understanding major ideas when reading English
- Understanding main ideas when listening to lectures and conversations in English
- Understanding important facts and details when listening to lectures and conversations in English

Test Score Data Retention

To provide you and your employer with a historical summary of your scores, scores will be kept on file and reported for two years.

Rescore Requests

If you feel that your scores are not an accurate reflection of your ability in English, you should contact your representative within six months of the test date. The representative will rescore your answer sheet and will give you a second score report. If a discrepancy is found between the first score report and the second one, the representative will pay for rescoring your answer sheet. However, if a discrepancy is not found, you may be charged a small fee for rescoring costs.

Policies and Guidelines

Policies and Guidelines for the Use of TOEIC Bridge Scores

Introduction

These guidelines are designed to provide information about the appropriate use of TOEIC Bridge test scores for corporations or schools that use the scores in making school or employment-related decisions. They are also intended to protect test takers from unfair decisions that may result from inappropriate uses of scores. Adherence to the guidelines is important.

Policies

In recognition of their obligation to ensure the appropriate use of TOEIC Bridge scores, the TOEIC Bridge Program and its authorized local representatives developed policies designed to make score reports available only to approved recipients to protect the confidentiality of examinees' scores and to follow up on cases of possible misuse of scores. The policies are discussed below.

Confidentiality. TOEIC Bridge scores, whether for an individual or aggregated for an institution, are confidential and can be released only by authorization of the individual or institution or by compulsion of legal process.

We recognize examinees' right to privacy with regard to information that is stored in data or research files held by Educational Testing Service and its local representatives, and our responsibility to protect examinees from unauthorized disclosure of the information.

Encouragement of appropriate use and investigation of reported misuse. All organizational users of TOEIC Bridge scores have an obligation to use the scores in accordance with the guidelines below, i.e., using multiple criteria, accepting only official TOEIC Bridge scores, etc. Organizations have a responsibility to ensure that all individuals using TOEIC Bridge scores are aware of these guidelines and to monitor the use of the scores, correcting instances of misuse when they are identified. The TOEIC Bridge Program and its authorized local representatives are available to assist institutions in resolving score-misuse issues.

Guidelines

Multiple Criteria

Regardless of the decision to be made, multiple sources of information should be used to ensure fairness and to balance the limitations of any single measure of knowledge, skills, or abilities. These sources may include grade point averages, and recommendations from teachers, supervisors, and colleagues. When used in conjunction with other criteria, TOEIC Bridge scores can be a powerful tool in making school or employment-related decisions.

Only Official TOEIC Bridge Score Reports

The only official reports of TOEIC Bridge scores are those issued by ETS authorized local representatives or by ETS. If an organization administers a TOEIC Bridge test internally, with ETS knowledge and approval, it can obtain and keep score reports of that test. Scores obtained from other sources should not be accepted. If there is a question about the authenticity of a score report, the question should be referred to ETS authorized local representatives, who will then verify the accuracy of the scores and whether an official report was issued.

Confidentiality of TOEIC Bridge Score

All individuals who have access to TOEIC Bridge scores should be aware of the confidential nature of the scores and agree to maintain their confidentiality. Policies should be developed and implemented to ensure that confidentiality is maintained.

Normally Appropriate Uses of TOEIC Bridge Scores

The suitability of a TOEIC Bridge test for a particular use should be explicitly examined before using test scores for that purpose. The following list of appropriate uses of TOEIC Bridge scores is based on the policies and guidelines outlined above. The list is meant to be illustrative, not exhaustive, in nature. There may be other appropriate uses of TOEIC Bridge scores, but any uses other than those listed below should be discussed in advance with TOEIC Bridge Program staff and its authorized local representatives to determine their appropriateness.

If a use other than those appropriate uses listed below is contemplated, it will be important for the user to validate the use of scores for that purpose. The TOEIC Bridge Program staff and its authorized local representatives will provide advice on the design of such validity studies.

Appropriate Uses. Used along with other sources of information, and provided all applicable guidelines are followed, TOEIC Bridge scores are suitable for the uses described below.

- Hiring of applicants for an open position within a corporation or organization where workplace/ everyday-life English is a required job skill
- Placement of applicants or candidates within a corporation or organization where workplace/ everyday-life English is a required job skill
- Measurement of workplace/ everyday-life English proficiency levels of students in schools
- Measurement of individuals' progress in workplace/ everyday-life English proficiency levels over time

Policies and Guidelines *(continued)*

Comments

Candidates can provide comments during the testing administration by asking the test supervisor for the Candidate Comment Form.

After taking the TOEIC Bridge test, please visit www.ets.org/toEICbridge to complete the Candidate Satisfaction Survey.

If you have additional questions or comments regarding the TOEIC Bridge test, please contact your local ETS TOEIC representative or TOEIC Program, ETS, Rosedale Road, Princeton, New Jersey 08541 USA, or e-mail us at toEIC@ets.org.

ETS provides a comprehensive suite of English Language Learning products and services that encourage learning, assess progress and measure proficiency. Backed by years of research, our programs support teachers and decision-makers and help individuals achieve academic, business and personal success.
To learn more, visit www.ets.org/ell.

For more information about the
TOEIC *Bridge*™ test, contact:

TOEIC Testing Program
Educational Testing Service
Rosedale Road
Princeton, NJ 08541

Phone: 1-609-771-7170

Fax: 1-609-771-7111

E-mail: TOEIC@ets.org
www.ets.org/toEIC



*English Language
Learning*



Copyright © 2007 by Educational Testing Service. All rights reserved. ETS, the ETS logos, and TOEIC are registered trademarks of Educational Testing Service (ETS). TOEIC BRIDGE is a trademark of ETS.

00378-57861 • RR17E10 • Printed in U.S.A.

729210

